

# Information Displays

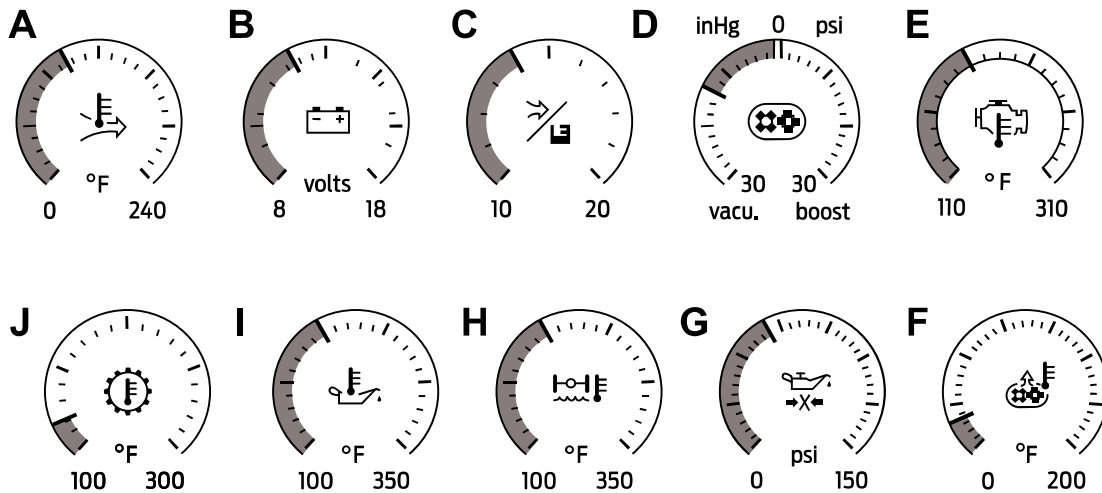
Cobra		
	Sport	
	Track	
MyColor	Primary Color	Choose your applicable setting
	Secondary Color	
	Create MyColor	

<sup>1</sup> See **Track Use** (page 44).

**Note:** **Quiet Start** allows you to schedule when the **Exhaust Mode** turns on the **Quiet** setting. The time window can be from 1 to 24 hours.

## Configure MyGauges

When configuring your gauges you can select to display up to three virtual gauges.



- A Inlet air temperature
- B Battery voltage
- C Air/fuel ratio
- D Vacuum/boost
- E Cylinder head temperature
- F Manifold charge temperature
- G Engine oil pressure
- H Axle temperature

# Information Displays

---

- I Engine oil temperature
- J Transmission oil temperature