



FORD PERFORMANCE

Mustang GT500 5.2L Oil Separator

NO PART OF THIS DOCUMENT MAY BE REPRODUCED WITHOUT PRIOR AGREEMENT AND WRITTEN PERMISSION OF FORD PERFORMANCE

PLEASE READ ALL OF THE FOLLOWING INSTRUCTIONS CAREFULLY PRIOR TO INSTALLATION.

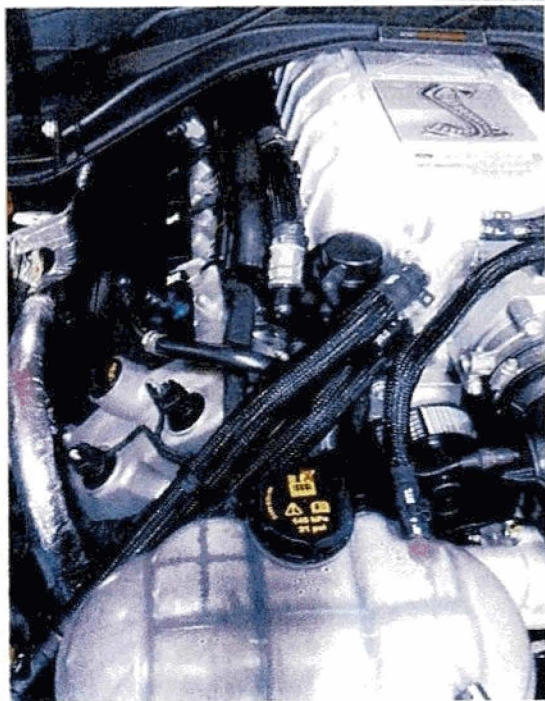
Kit contents:

- 1 - Oil separator assembly (KR3V-6A785-AD)
- 2 - PCV tubes (KR3V-6K817-AB and KR3V-6K817-BA)
- 1 - Bracket (KR3V-6D646-AB)
- 3 - 10mm flanged nut (W52411-S437)
- 1 - Cam Cover vent tube (4L2E-6762-AA)
- 1 - Elbow fitting (KR3V-6762-AA)
- 1 - Drain hose (KR3V-6C823-AA)
- 2 - Constant tension clamps (WS25884-S444)
- 1 - 6.5 mm push pin tie strap (8UST-14E047-HA)
- 2 - 8 mm push pin tie strap (AUST-14E047-AA)
- 2 - Retainer wire harness tie strap (AU5T-14E047-MA)

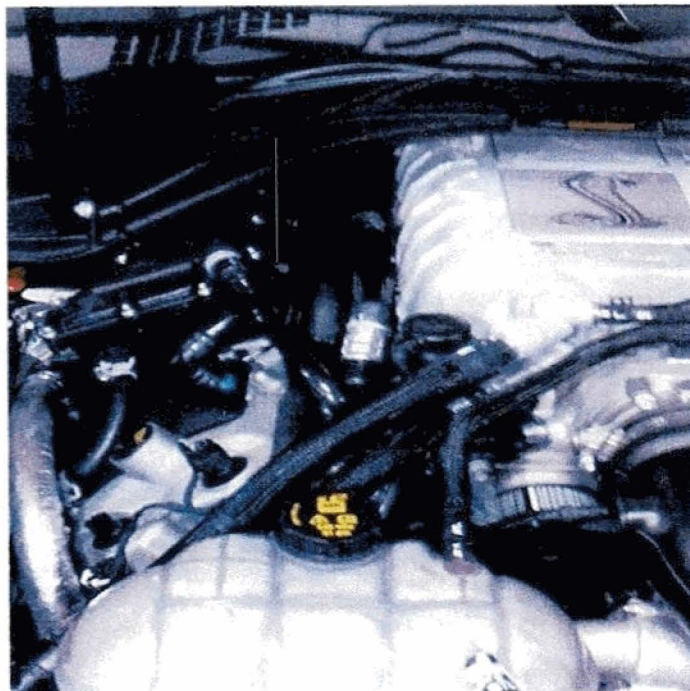
Note: Photos and/or illustrations are supplied as kit installation aids and for clarifications. Actual kit parts may appear different. Fit and Function have not been compromised.

Kit is installed on passenger side engine cam cover.

Before



After



Factory Ford shop manuals are available from Helm Publications, 1-800-782-4356

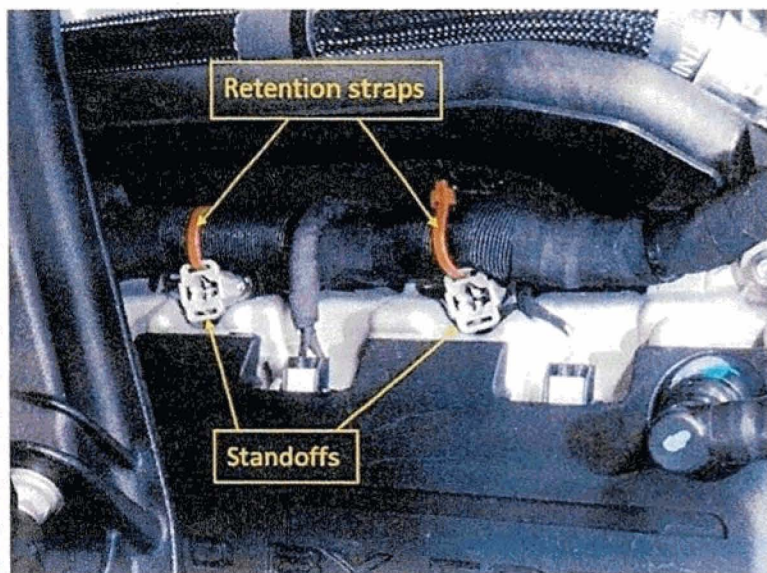


FORD PERFORMANCE

Mustang GT500 5.2L Oil Separator

NO PART OF THIS DOCUMENT MAY BE REPRODUCED WITHOUT PRIOR AGREEMENT AND WRITTEN PERMISSION OF FORD PERFORMANCE

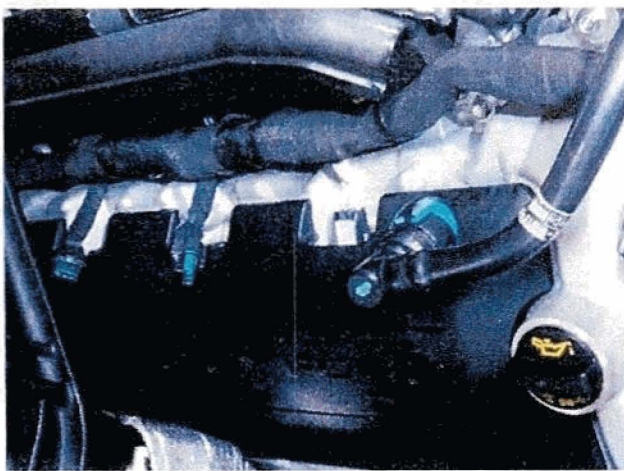
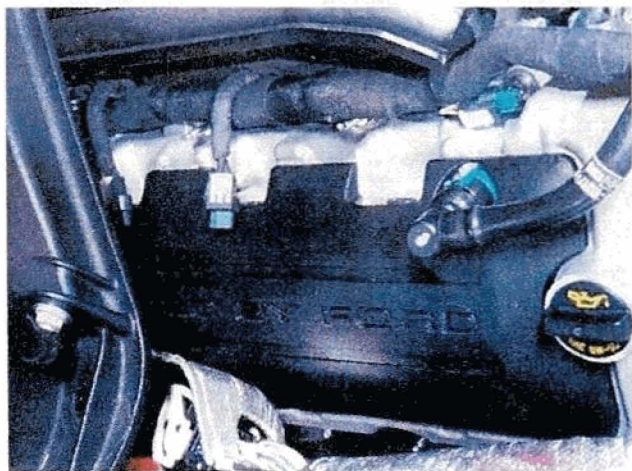
Step 1. Cut and remove wiring harness retention straps. Remove retention strap standoffs from cam cover stud bolts.



Step 2. Disengage coil wires at coil #2 and #3. Re-route from on top of wiring harness to below the harness.

On Top

Under



Factory Ford shop manuals are available from Helm Publications, 1-800-782-4356

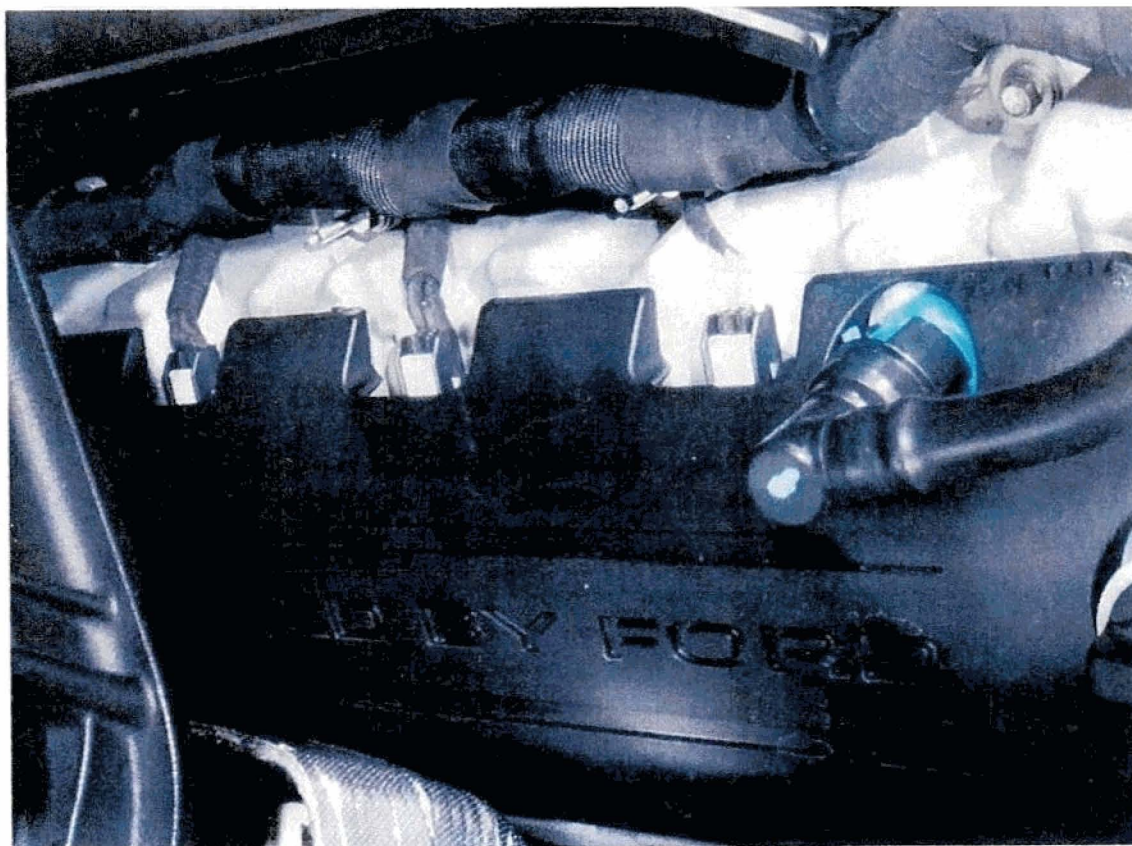


FORD PERFORMANCE

Mustang GT500 5.2L Oil Separator

NO PART OF THIS DOCUMENT MAY BE REPRODUCED WITHOUT PRIOR AGREEMENT AND WRITTEN PERMISSION OF FORD PERFORMANCE

Step 3. Re-engage coil wires routed below the harness and push harness to gain clearance at cam cover stud bolts.



Factory Ford shop manuals are available from Helm Publications, 1-800-782-4356

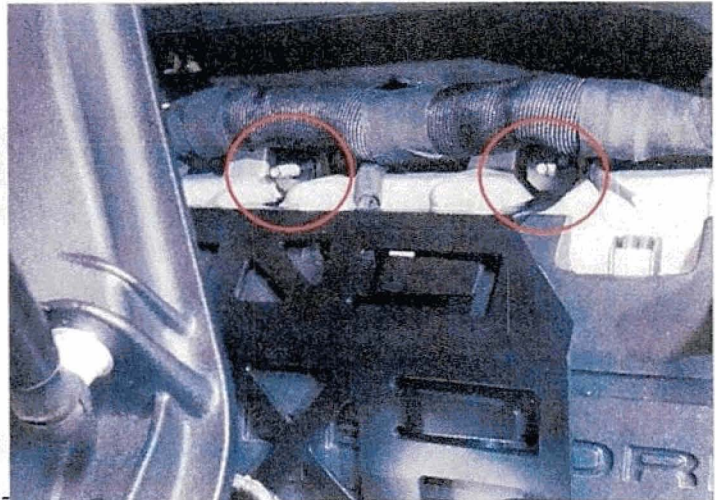


FORD PERFORMANCE

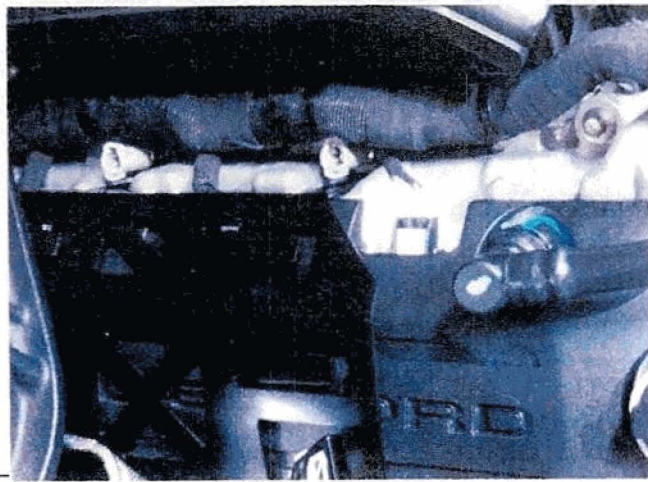
Mustang GT500 5.2L Oil Separator

NO PART OF THIS DOCUMENT MAY BE REPRODUCED WITHOUT PRIOR AGREEMENT AND WRITTEN PERMISSION OF FORD PERFORMANCE

Step 4. Position bracket under strut tower brace and wiring harness. Install onto 3 cam cover stud bolts. Secure with 3 nuts (10mm flanged nut) and torque to 5-7 Nm. **Tip,** to avoid dropping and/or losing flanged nut, use magnetic socket to hold nut during installation onto lower stud. **Verify clearance between bracket and coil wires.**



Step 5. Install two stud protectors DUST-14E047-MA supplied in the kit onto cam cover stud bolts.



Factory Ford shop manuals are available from Helm Publications, 1-800-782-4356

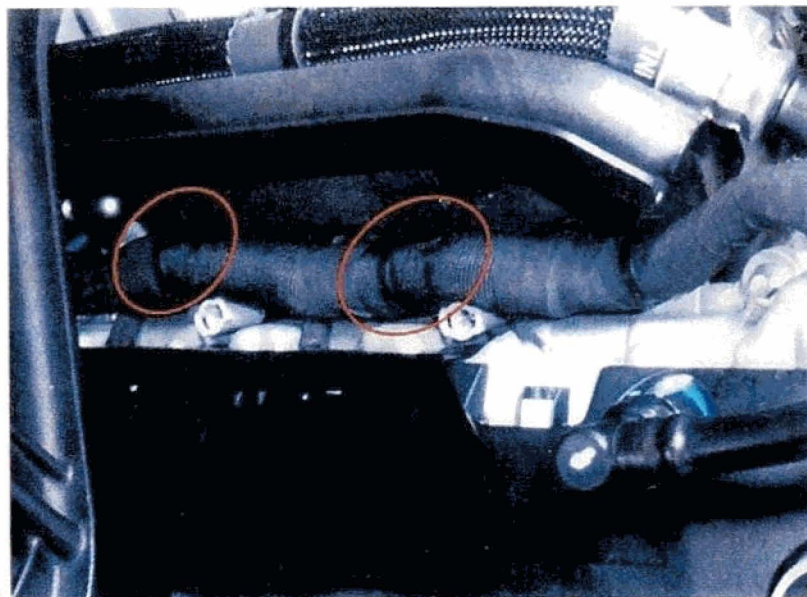
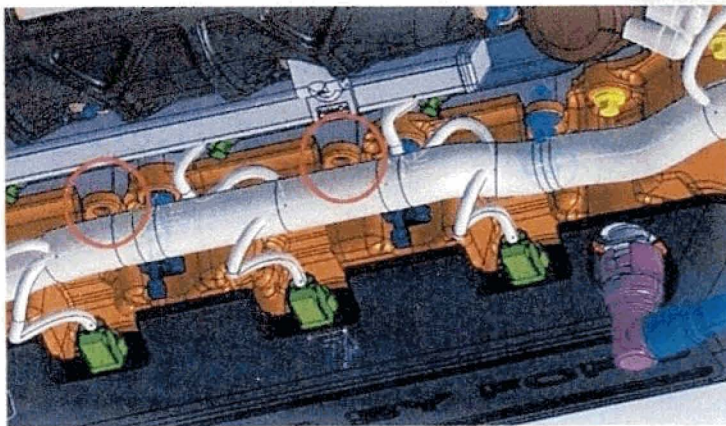
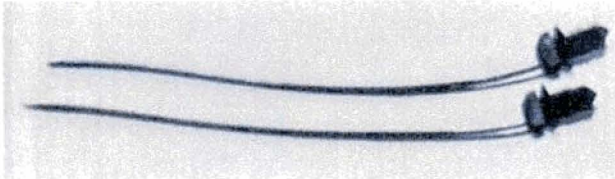


FORD **PERFORMANCE**

Mustang GT500 5.2L Oil Separator

NO PART OF THIS DOCUMENT MAY BE REPRODUCED WITHOUT PRIOR AGREEMENT AND WRITTEN PERMISSION OF FORD PERFORMANCE

Step 6. Install two 8 mm push pin tie straps AUST-14E047-A supplied in the kit, to the cam cover (next to bracket mounting studs) and re-position wiring harness, then secure with the tie straps



Factory Ford shop manuals are available from Helm Publications, 1-800-782-4356

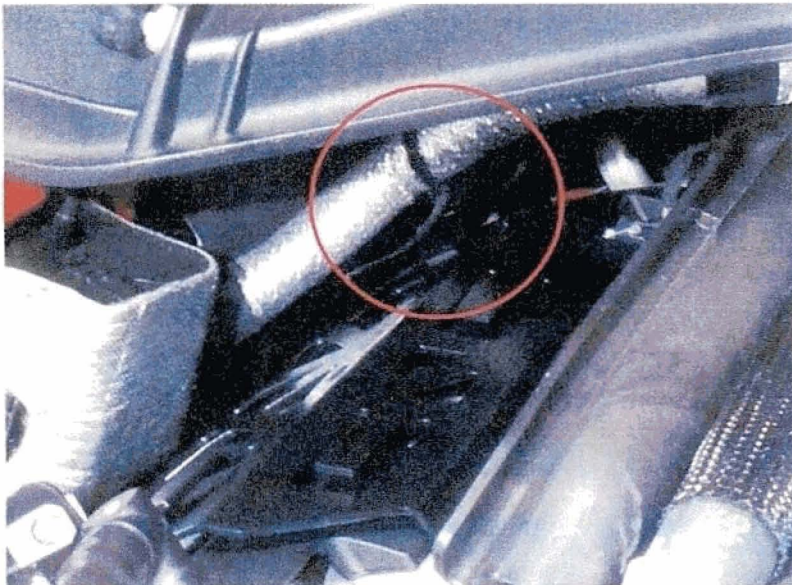


FORD PERFORMANCE

Mustang GT500 5.2L Oil Separator

NO PART OF THIS DOCUMENT MAY BE REPRODUCED WITHOUT PRIOR AGREEMENT AND WRITTEN PERMISSION OF
FORD PERFORMANCE

Step 7. Loosely install 6.5 mm push pin tie strap 8U5T-14E047-HA supplied in kit onto the transmission wiring harness. Route the transmission wiring harness across tab at rear of bracket and press the push pin into the tab. Tighten the tie strap to secure wire harness to bracket.



Step 8. Remove PCV breather hose (passenger cam cover to super charger). **NOTE:** Save hose for re-use when/if the kit is ever removed from the vehicle.



Factory Ford shop manuals are available from Helm Publications, 1-800-782-4356

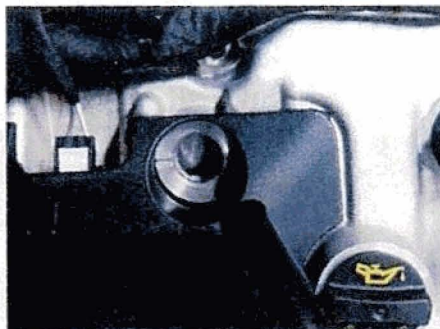
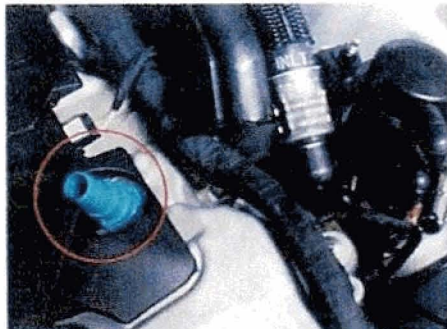


FORD PERFORMANCE

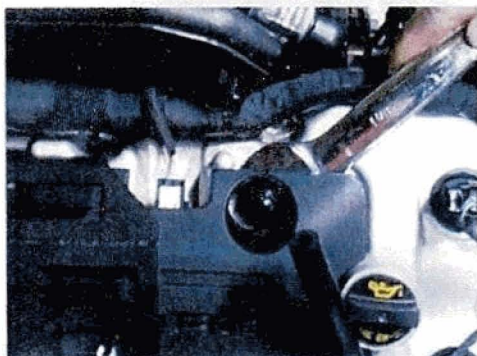
Mustang GT500 5.2L Oil Separator

NO PART OF THIS DOCUMENT MAY BE REPRODUCED WITHOUT PRIOR AGREEMENT AND WRITTEN PERMISSION OF FORD PERFORMANCE

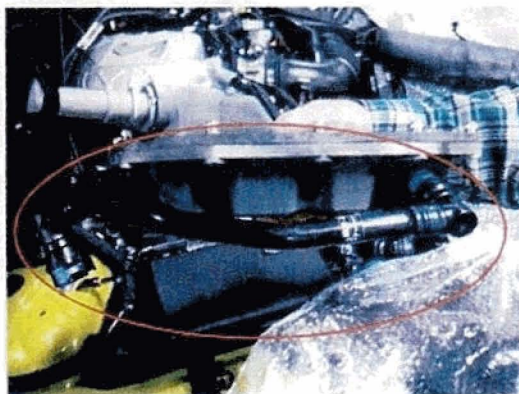
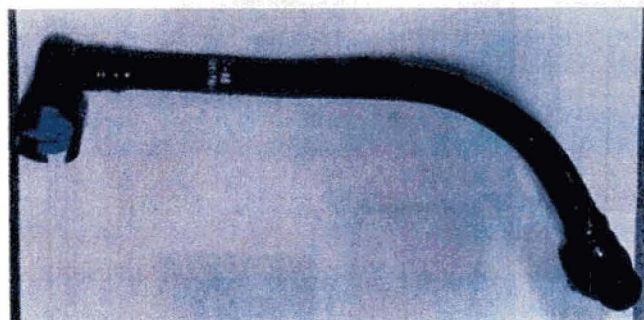
Step 9. Remove PCV from passenger side engine cam cover. **NOTE:** When/if the fit is ever removed from the vehicle, a new PCV will be required.



Step 10. Install Cam Cover vent tube supplied in kit. Slightly raise the forward edge of the coil cover, 1-1/16" open end wrench, fully seat the vent tube.



Step 11. Connect PCV hose KR3V-6K817-AB supplied in kit to the rear inlet port of the Oil Separator.



Factory Ford shop manuals are available from Helm Publications, 1-800-782-4356



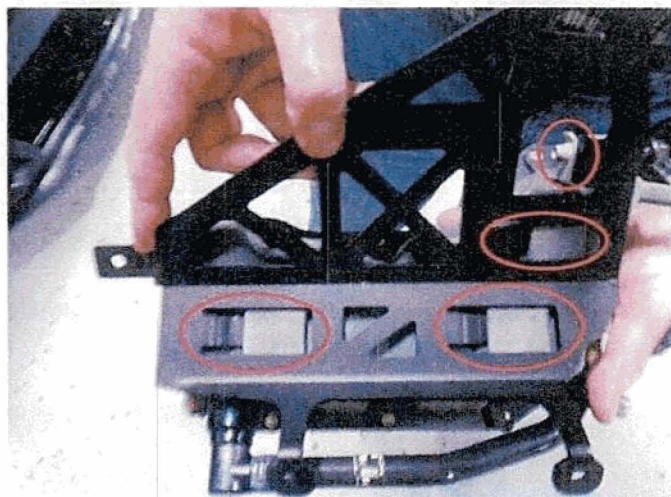
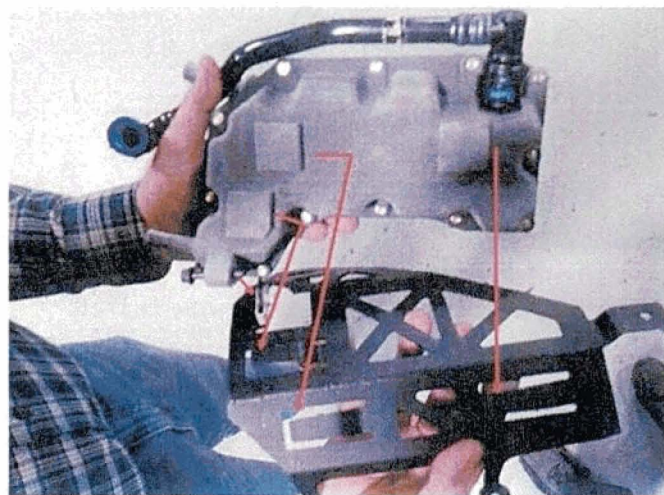
FORD PERFORMANCE

Mustang GT500 5.2L Oil Separator

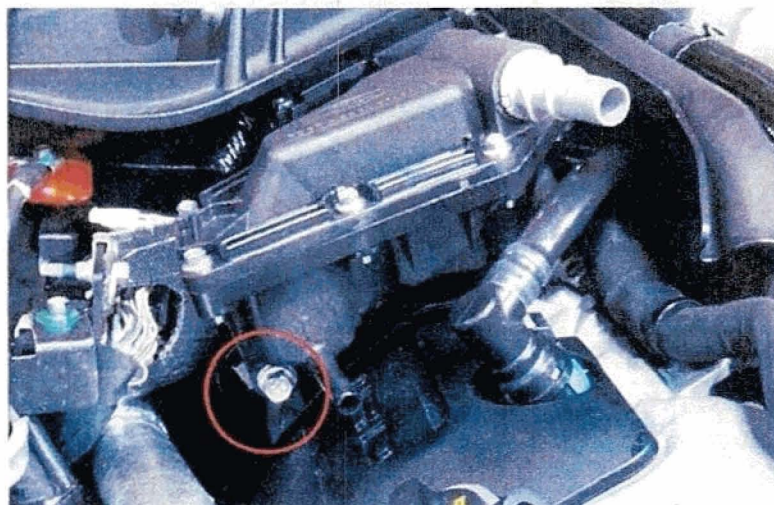
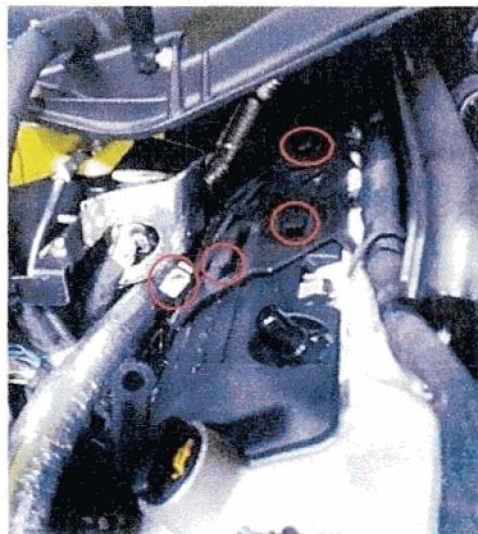
NO PART OF THIS DOCUMENT MAY BE REPRODUCED WITHOUT PRIOR AGREEMENT AND WRITTEN PERMISSION OF FORD PERFORMANCE

Step 12. Install Oil Separator assembly to bracket (Slide onto bracket tabs) and secure by tightening the captive bolt to 10 +/- 1.5 Nm torque.

Off vehicle views for reference:



In vehicle installation:



Step 13. Connect Oil Separator inlet tube loose end to cam cover vent tube installed previously to oil separator at Step 11.

Factory Ford shop manuals are available from Helm Publications, 1-800-782-4356

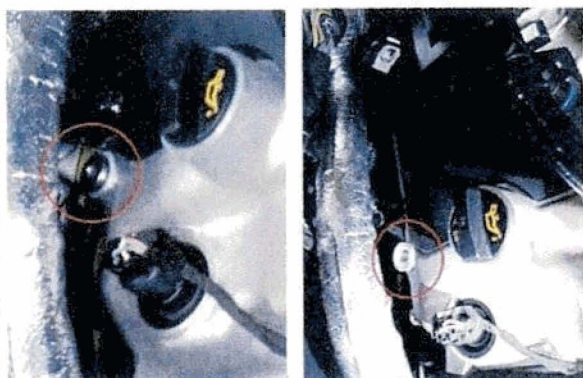


FORD PERFORMANCE

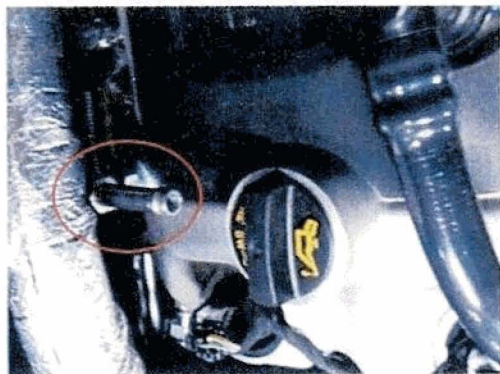
Mustang GT500 5.2L Oil Separator

NO PART OF THIS DOCUMENT MAY BE REPRODUCED WITHOUT PRIOR AGREEMENT AND WRITTEN PERMISSION OF FORD PERFORMANCE

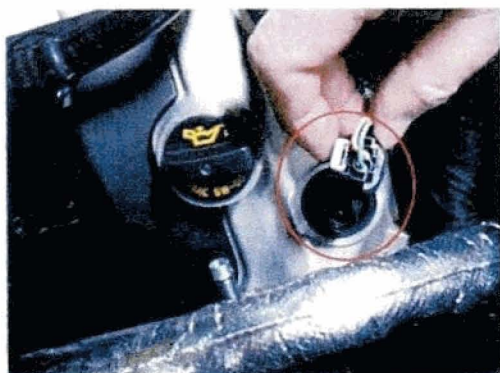
Step 14. Remove plug from cam cover. Use ¼" internal hex (allen type) drive. **NOTE:** Save plug for re-use when/if the kit is ever removed from the vehicle.



Step 15. Install 90 deg fitting. Fitting should be hand tightened 4 turns and aligned as shown.



Step 16. Disconnect VCT electrical connector to gain tool clearance for tightening the 90 deg fitting jam nut.



Factory Ford shop manuals are available from Helm Publications, 1-800-782-4356

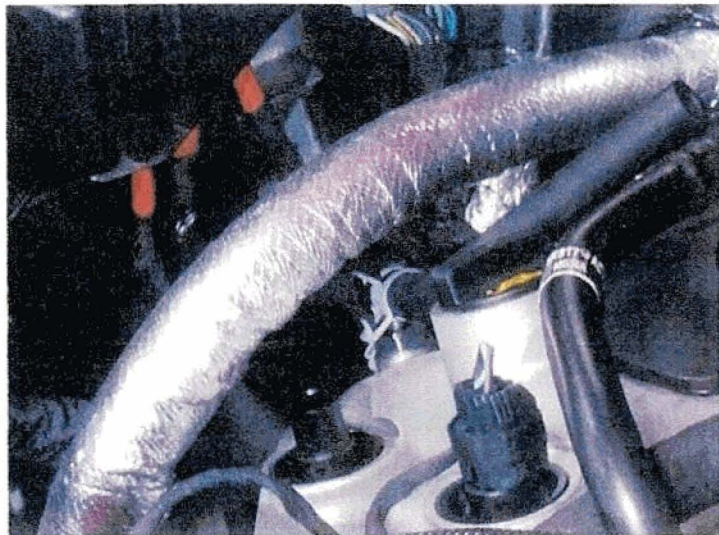


FORD PERFORMANCE

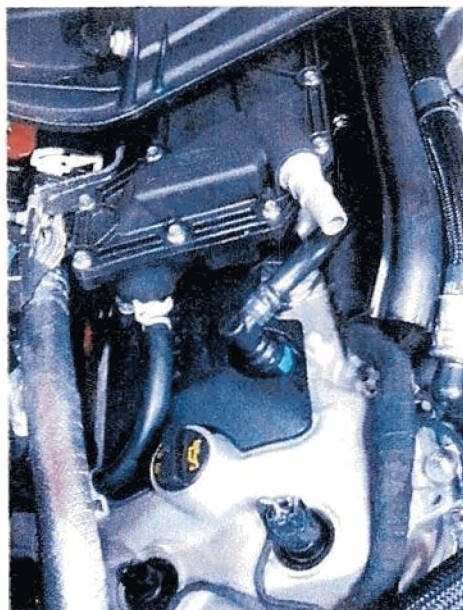
Mustang GT500 5.2L Oil Separator

NO PART OF THIS DOCUMENT MAY BE REPRODUCED WITHOUT PRIOR AGREEMENT AND WRITTEN PERMISSION OF FORD PERFORMANCE

Step 17. Install drain hose and clamp at fitting, with clamp oriented towards front of vehicle for clearance to the A/C hose.



Step 18. Attach drain hose and clamp to Oil Separator drain port. Fully seat hose on drain port and align clamp with indicator on separator housing.



Factory Ford shop manuals are available from Helm Publications, 1-800-782-4356



FORD PERFORMANCE

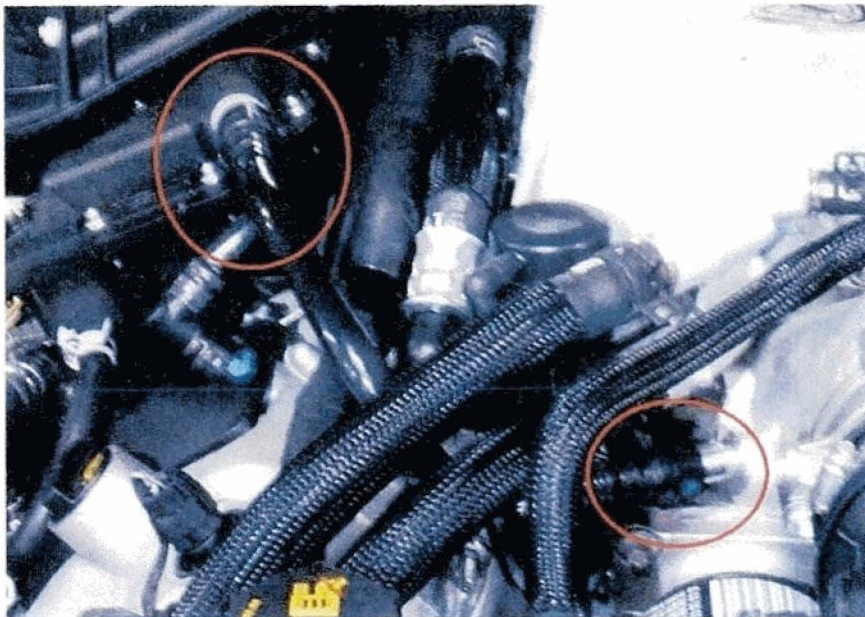
Mustang GT500 5.2L Oil Separator

NO PART OF THIS DOCUMENT MAY BE REPRODUCED WITHOUT PRIOR AGREEMENT AND WRITTEN PERMISSION OF
FORD PERFORMANCE

Step 19. Secure fitting (11/16" crows foot) at the orientation established in Step 15 (after adjusting slightly to assure clearance to cam cover and 'no kinks' as hose routes to the oil separator assembly) by restraining the elbow while tightening jam nut to 25 Nm torque.

Step 20. Reconnect VCT electrical connector (previously removed at Step 16)

Step 21. Install remaining PCV tube KR3V-6K817-BA supplied in kit to top of Oil Separator and at the super charger.



Factory Ford shop manuals are available from Helm Publications, 1-800-782-4356

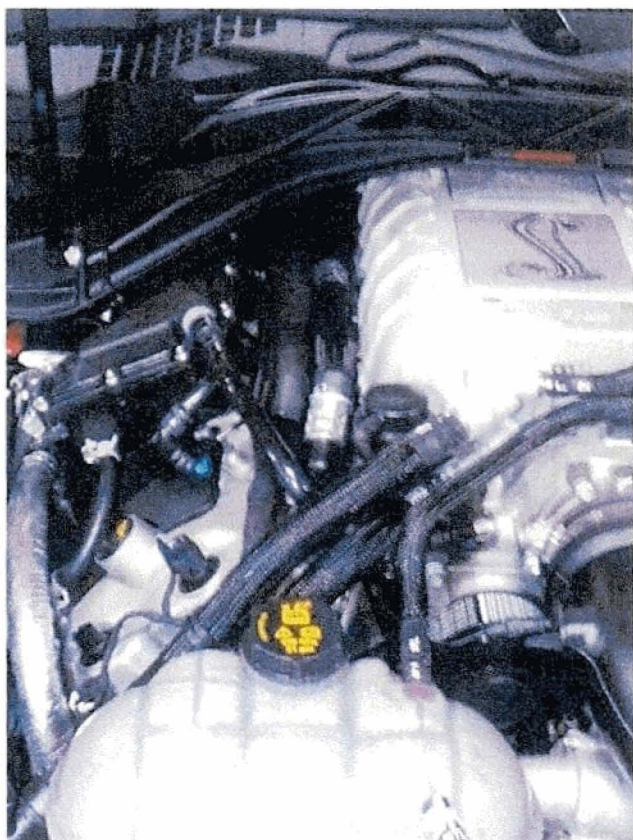


FORD PERFORMANCE

Mustang GT500 5.2L Oil Separator

NO PART OF THIS DOCUMENT MAY BE REPRODUCED WITHOUT PRIOR AGREEMENT AND WRITTEN PERMISSION OF FORD PERFORMANCE

Congratulations



If removal of the separator top cover is required, perform steps 21, 18, 15 and 12 in reverse order to remove the separator assembly. Internal mesh screen can be removed. Internal mesh screen can be cleaned with solvent. Torque socket head screws to 5 to 7 Nm during reassembly. Reinstall separator assembly per steps 12, 13, 19 and 21.

Factory Ford shop manuals are available from Helm Publications, 1-800-782-4356