



[Menu](#)

Search Inventory by Make, Model, VIN, and More..

[Register](#)

## 2015 FORD MUSTANG 50TH ANNIVERSARY | E

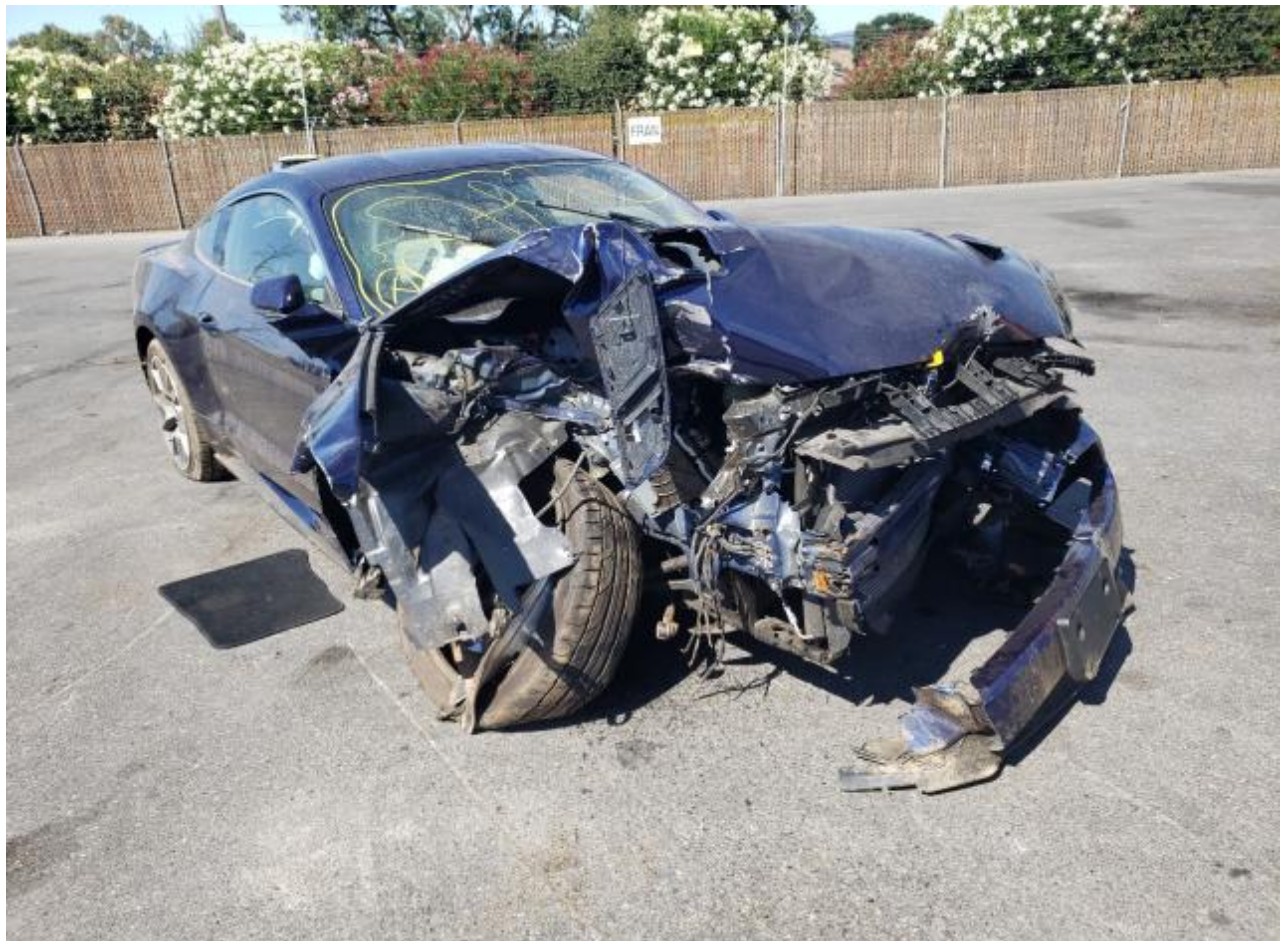
**Lot #** 49674461 | **Sale Location:** [CA - SAN JOSE](#) - -/B060 | **Sale Date:** [Upcoming Lot](#)

☆ Add

### Bid Information

**Photos for Lot #49674461**

[◀ Back to Lot Details](#)



[⬅ Back to Top](#) | [Lot Details](#) ➡



[⬅ Back to Top](#) | [Lot Details](#) ➡





[↩ Back to Top | Lot Details ↘](#)



[⬅ Back to Top](#) | [Lot Details](#) [➡](#)



[⬅ Back to Top](#) | [Lot Details](#) [➡](#)

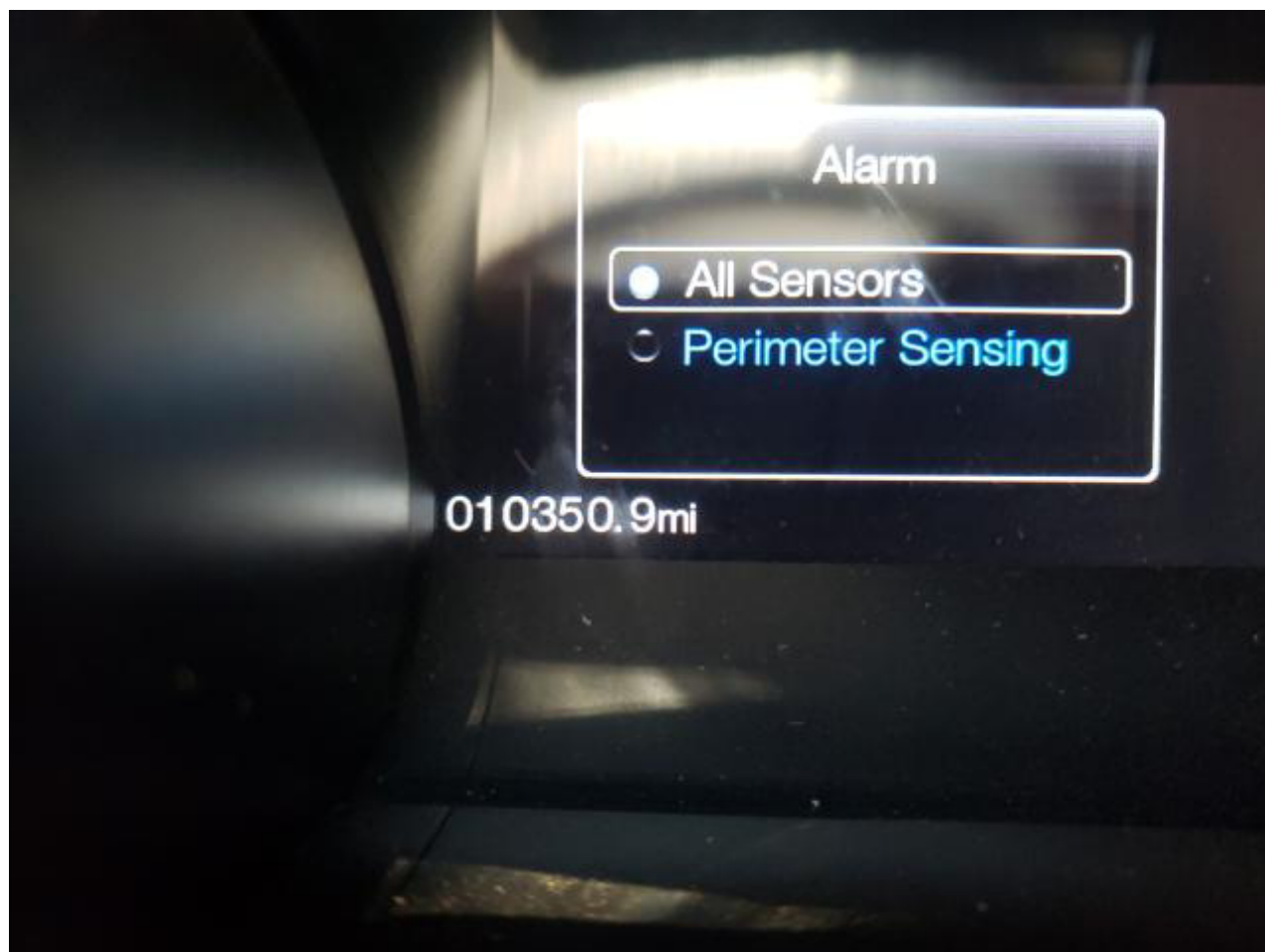




[↩ Back to Top | Lot Details ↪](#)



[↩ Back to Top](#) | [Lot Details](#) [↘](#)



[⬆️ Back to Top](#) | [Lot Details](#) [⬇️](#)





⬅ [Back to Top](#) | [Lot Details](#) ➡

MFD. BY FORD MOTOR CO.

DATE: 10/14 GVWR: 2141 KG ( 4720 LB)  
FRONT GAWR: 1055 KG ( 2325 LB) REAR GAWR: 1107 KG ( 2440 LB)

THIS VEHICLE CONFORMS TO ALL APPLICABLE FEDERAL MOTOR  
VEHICLE SAFETY, BUMPER, AND THEFT PREVENTION STANDARDS  
IN EFFECT ON THE DATE OF MANUFACTURE SHOWN ABOVE.

VIN: 1FA6P8RF5F5500409 TYPE: Passenger Car  
MAXIMUM LOAD = OCCUPANTS + LUGGAGE = 303KG/ 668LB  
OCCUPANTS = 4 TOTAL; 2 FRONT, 2 REAR

TIRE (FR): 255/40ZR19 96Y RIMS (FR): 19x9.0J  
(RR): 275/40ZR19 101Y (RR): 19x9.5J  
PRESSURE (FR): 220 kPa/ 32 PSI COLD (RR): 220 kPa/ 32 PSI COLD



1FA6P8RF5F5500409

TRAILER TOWING - SEE OWNER GUIDE

EXT PNT: L6

INT TR	TP/PS	R	AXLE	TR	SPR	RC: 52	DSO:
Q6		3	BB	X	JJHH		

1201410156155

CMC 5U5A-5420472-AA

F0072  
R0141






[⬆️ Back to Top](#) | [Lot Details](#) [⬇️](#)

[⏪ Back to Lot Details](#)

**Lot # 49674461**

**More Information**

VIN:	1FA6P8RF5F5***** 
Doc Type:	CA - 
Odometer:	
Highlights:	Enhanced Vehicles 
Primary Damage:	FRONT END
Secondary Damage:	REAR END
Est. Retail Value:	\$30,569 USD
Body Style:	
Vehicle Type:	AUTOMOBILE
Color:	BLUE
Engine Type:	5.0L 8
Cylinders:	8
Transmission:	MANUAL
Drive:	Rear-wheel drive
Fuel:	GAS
Keys:	YES
Build Sheet:	<a href="#">Click Here</a>
Notes:	There are no Notes for this Lot

 **WARNING:** Operating, servicing and maintaining a passenger vehicle, pickup truck, van or off-road vehicle





**WARNING:** Operating, servicing and maintaining a passenger vehicle, pickup truck, van or off-road vehicle can expose you to chemicals including engine exhaust, carbon monoxide, phthalates, and lead, which are known to the State of California to cause cancer and birth defects and other reproductive harm. To minimize

## Bid Information

[Glossary](#)>

**Add to Watchlist**

## Sale Information

Location:	<b><u>CA - SAN JOSE</u></b>
Sale Date:	<b><u>Upcoming Lot</u></b>
Sale Name:	<b><u>CA - SAN JOSE</u></b>
Lane/Item/Grid/Row:	<b><u>-/-/B060</u></b>
Last Updated:	<b>07/12/2021 5:45 pm</b>