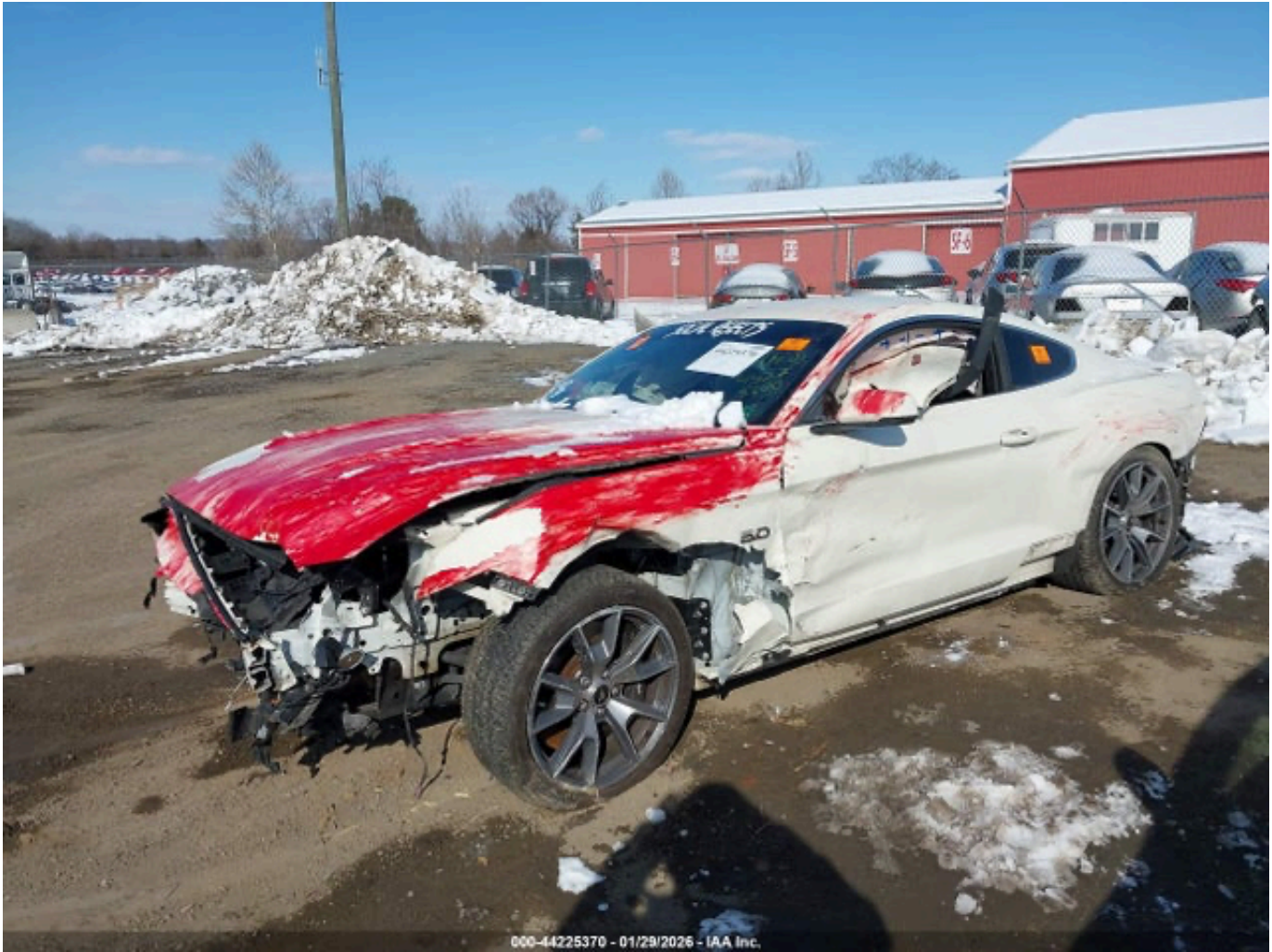


Print Photos





000-44225370 - 01/29/2026 - IAA Inc.



000-44225370 - 01/29/2026 - IAA Inc.



000-44225370 - 01/29/2026 - IAA Inc.





000-44225370 - 01/29/2026 - IAA Inc.





000-44225370 - 01/29/2026 - IAA Inc.

LOADING INFORMATION

4 FRONT: 2 REAR: 2

303 kg or 668 lbs.

SEE OWNERS
MANUAL FOR
ADDITIONAL
INFORMATION

1FA6P8RF3F5501509

MFD. BY FORD MOTOR CO.

DATE: 12/14
FRONT GAWR: 1055 KG (2325 LB)
REAR GAWR: 1107 KG (2440 LB)
GVWR: 2141 KG (4720 LB)
THIS VEHICLE CONFORMS TO ALL APPLICABLE FEDERAL MOTOR VEHICLE SAFETY, BUMPER, AND THEFT PREVENTION STANDARDS IN EFFECT ON THE DATE OF MANUFACTURE SHOWN ABOVE.

VIN: 1FA6P8RF3F5501509 TYPE: Passenger Car
MAXIMUM LOAD - OCCUPANTS + LUGGAGE = 303KG/ 668LB
OCCUPANTS - 4 TOTAL; 2 FRONT, 2 REAR

TIRE (FR): 255/40ZR19 96Y RIMS (FR): 19x9.0J
(RR): 275/40ZR19 101Y (RR): 19x9.5J
PRESSURE (FR): 220 kPa/ 32 PSI COLD (RR): 220 kPa/ 32 PSI COLD



1FA6P8RF3F5501509

TRAILER TOWING - SEE OWNER GUIDE

EXT PNT: N4 RC: 27 DSO: F0072
R0142
INT TR | TP/PS | R | AXLE | TR | SPR | FZG2K
06 | 3 | BB | X | JJHH | 20A
1201412107348 CMC 5USA-5420472-AA





000-44225370 - 04/21/2026 - IAA Inc