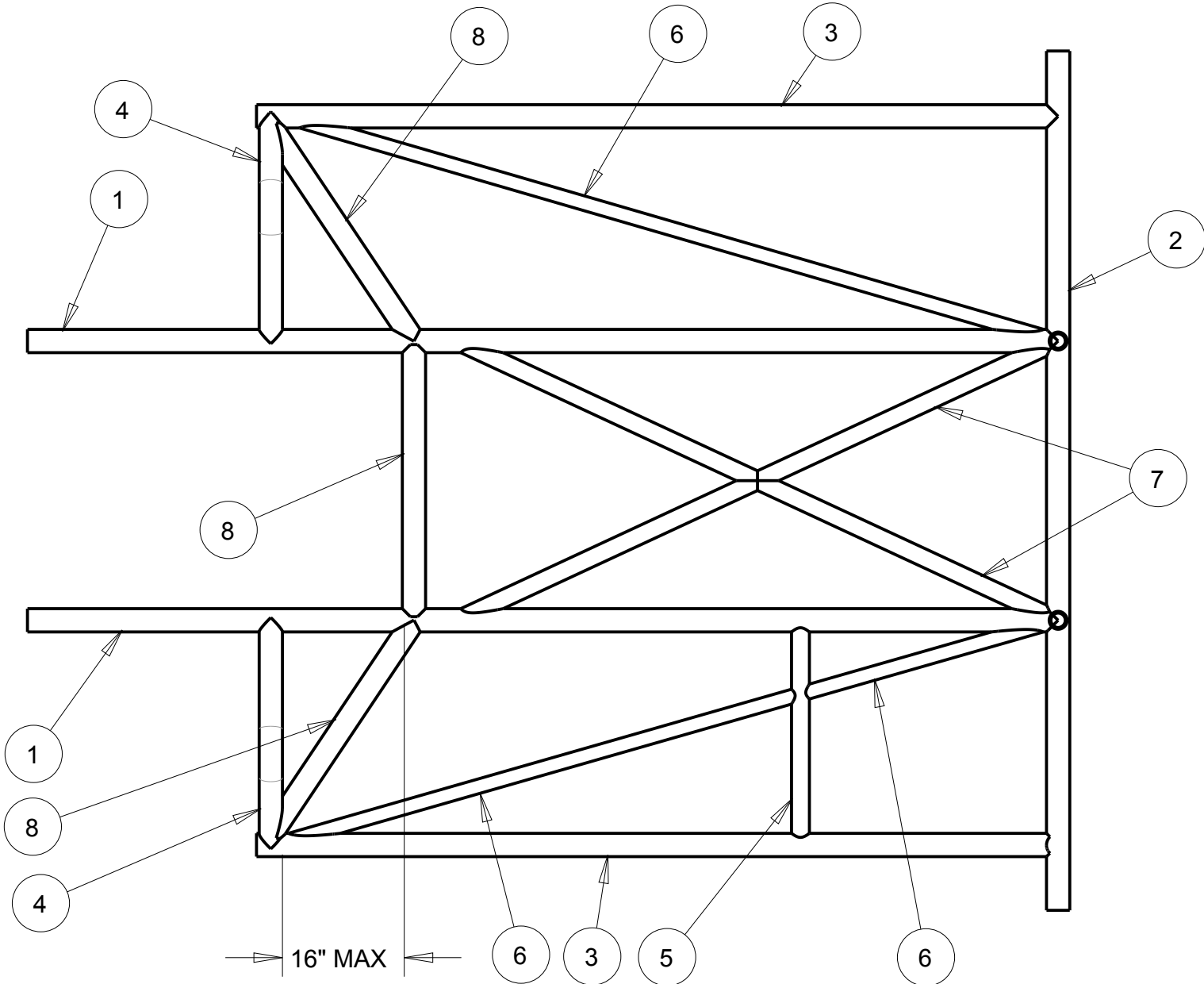
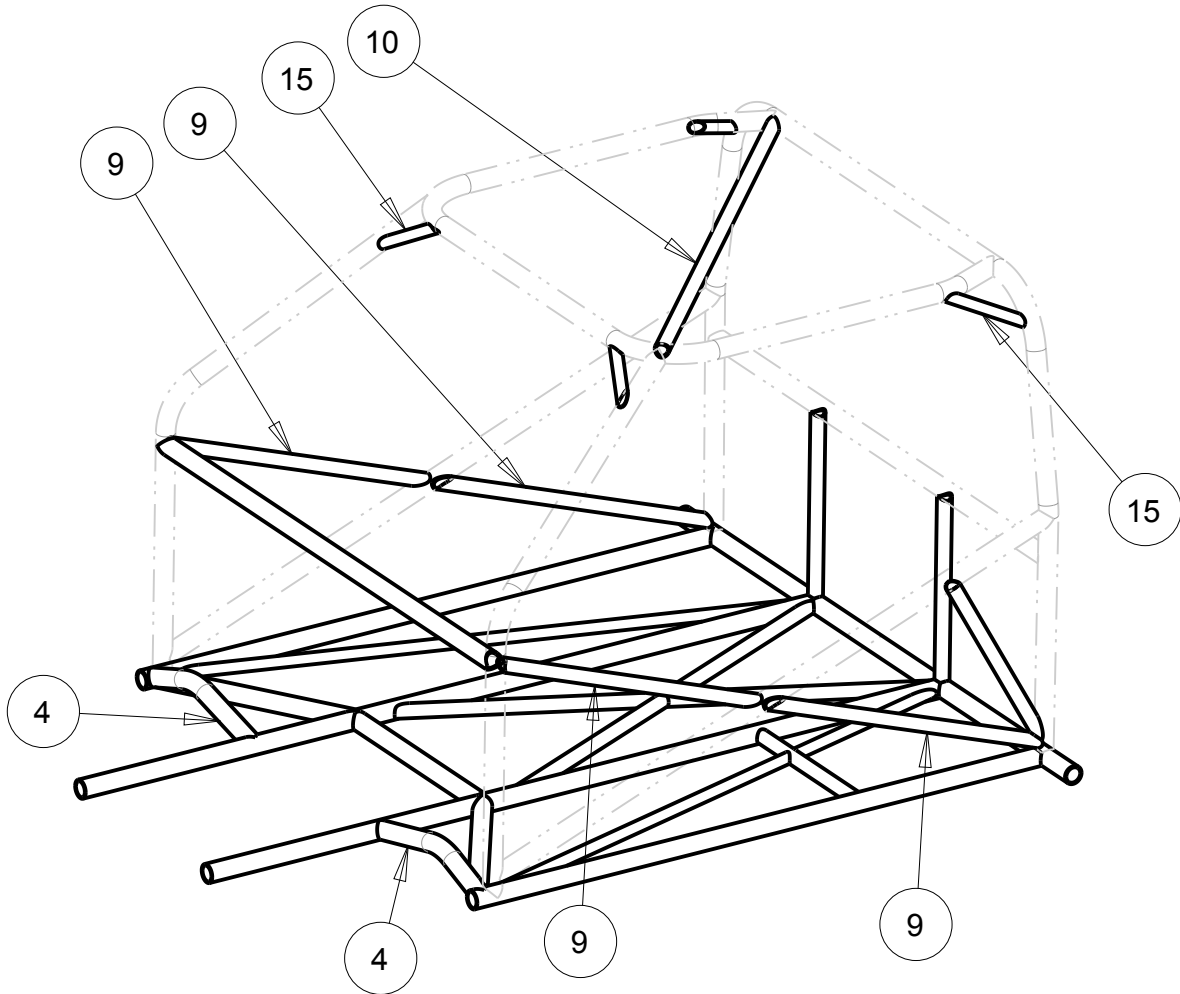


- NOTE:
- 1) DUE TO THE VARITION IN CHASSIS DESIGNS IT IS THE RESPONSIBILITY OF THE INSTALLER TO INSURE THAT THE CHASSIS MEETS SFI AND/OR SANTIONING BODY RULES, REGUALATIONS AND SPECIFICATIONS.
 - 2) REFER TO THE CONSTRUCTION NOTES AND SFI SPECIFICATIONS FOR COMPONENT LOCATIONS.
 - 3 TUBING HAS BEEN SUPPLIED LONGER THAN REQUIRED TO ALLOW FOR DIFFERENCES IN CHASSIS COFIGURATIONS.
 - 4) ITEMS SHOWN IN PHANTOM LINE ARE NOT INCLUDED WITH THIS KIT.

REFER TO DRAWING 13-362 FOR
FUNNY CAR CAGE ARRANGEMENT



THESE CHASSIS COMPONENTS ARE DESIGNED SPECIFICALLY FOR DRAG RACING. S & W RECOMMENDS CHECKING WITH THE APPROPRIOTE SANCTIONING BODY FOR WELDING REQUIREMENTS AND SPECIFICATIONS.

S & W RACE CARS
11 MENNONITE CHURCH RD
SPRING CITY, PA 19475

0	05MAR13	JEB	INITIAL RELEASE
REV	DATE	DRN	DESCRIPTION
TOLERANCES: FRACTIONS ±1/32 2 PLC DEC ±0.01 3 PLC DEC ±0.005 ANGLES ±0.5°			SFI 25.4 COCKPIT UPGRADE GENERAL ARRANGEMENT
MAT'L:			
PART No: 13-380			DRW No: 13-380 - 1